



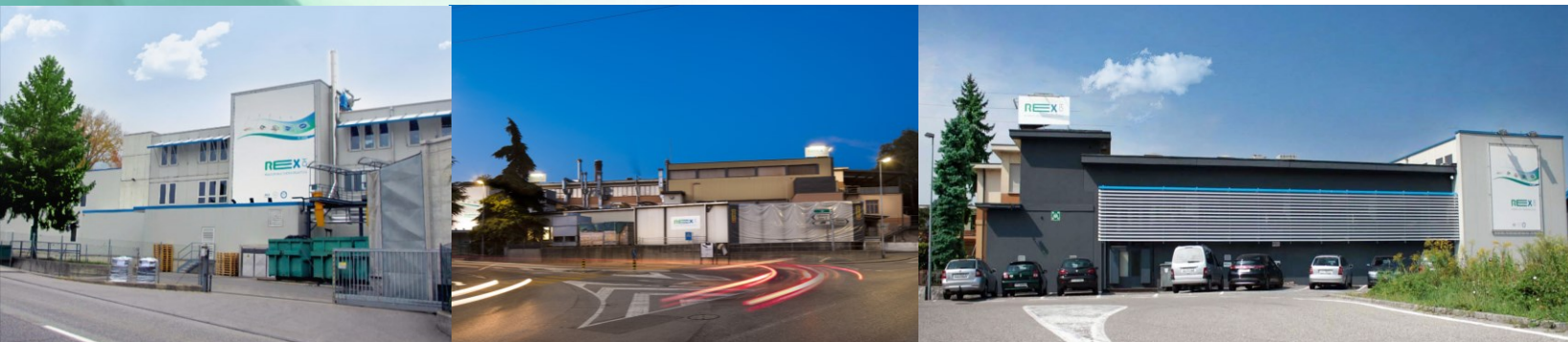
COMPANY PROFILE

REX

RUBBER AND THERMOPLASTICS

-  About us
-  Where we are
-  How we operate
-  Products
-  Our sales team

ABOUT US

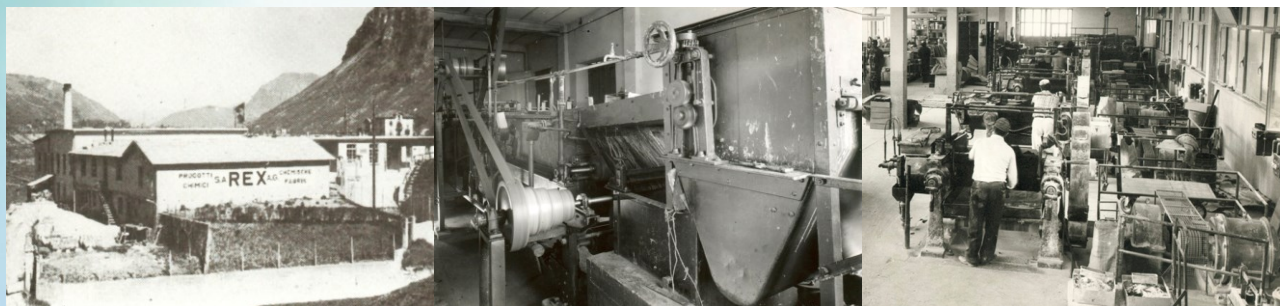


1935



Chemical products for the shoe industry

1950



Manufacturing of rubber compounds and impregnated textiles

1970



Pioneers in productions with of 2 or more components

1990



Extension of product range: products in foam and for the railway sector

2000



Moulding with thermoplastics and silicone (overmoulding)

Extension of R&D

Collaboration with universities



2010



Certified Suppliers



IRIS rev. 2



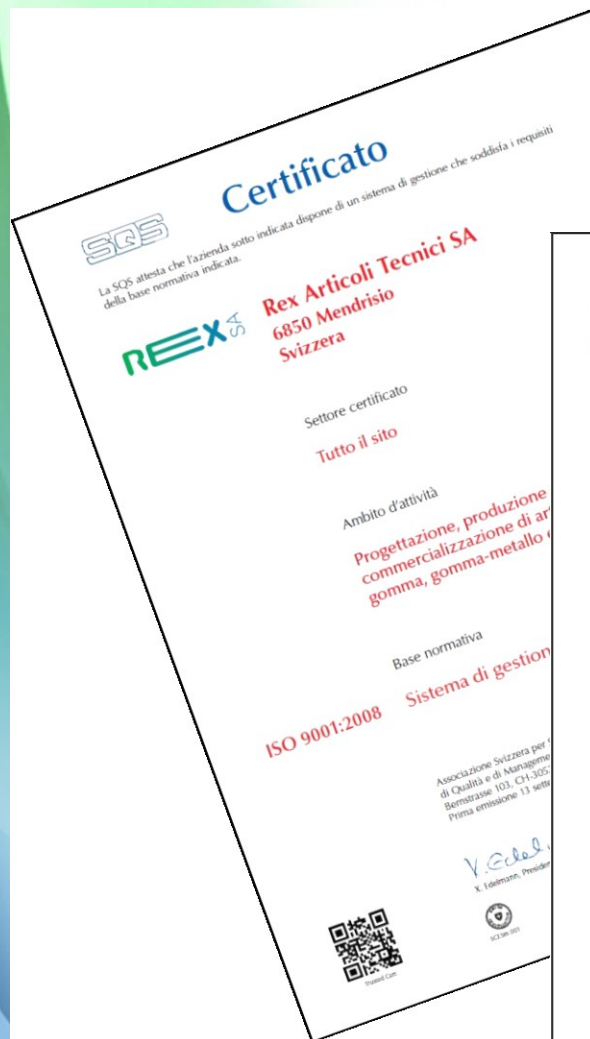
**Manufacturing plant
expansion**

International Expansion

Advanced research & solutions

Partnership with clients

Vertical integration (natural rubber plantations)



this document has been produced by the Audit-tool V0.1 0.2 licensed to DQS
© 2010 UNIFE. All rights reserved



KunststoffVerbandSchweiz

Association Suisse des matières plastiques

Associazione Svizzera delle materie plastiche

Swiss plastics Association

SWISSRAIL
Industry Association

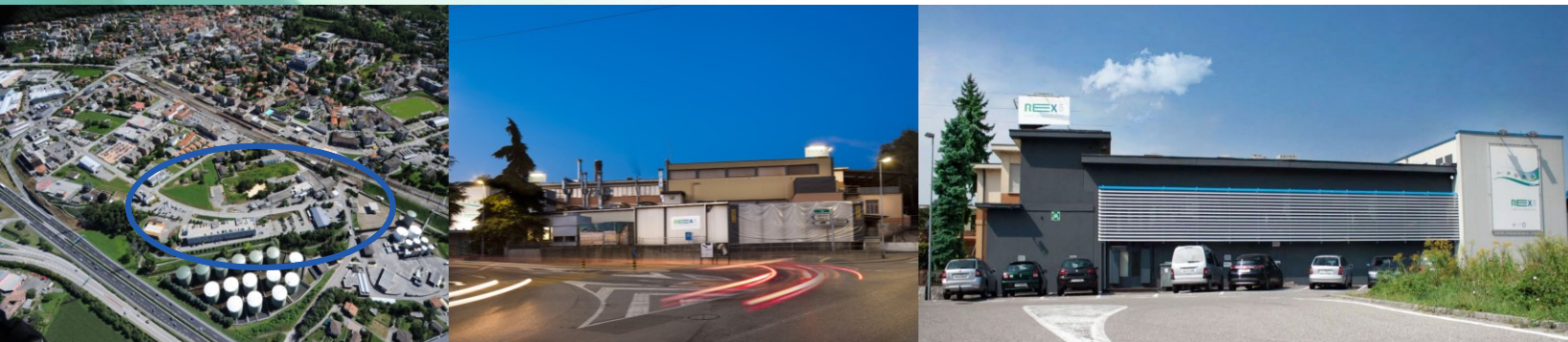
aiti
ASSOCIAZIONE INDUSTRIE TICINESI

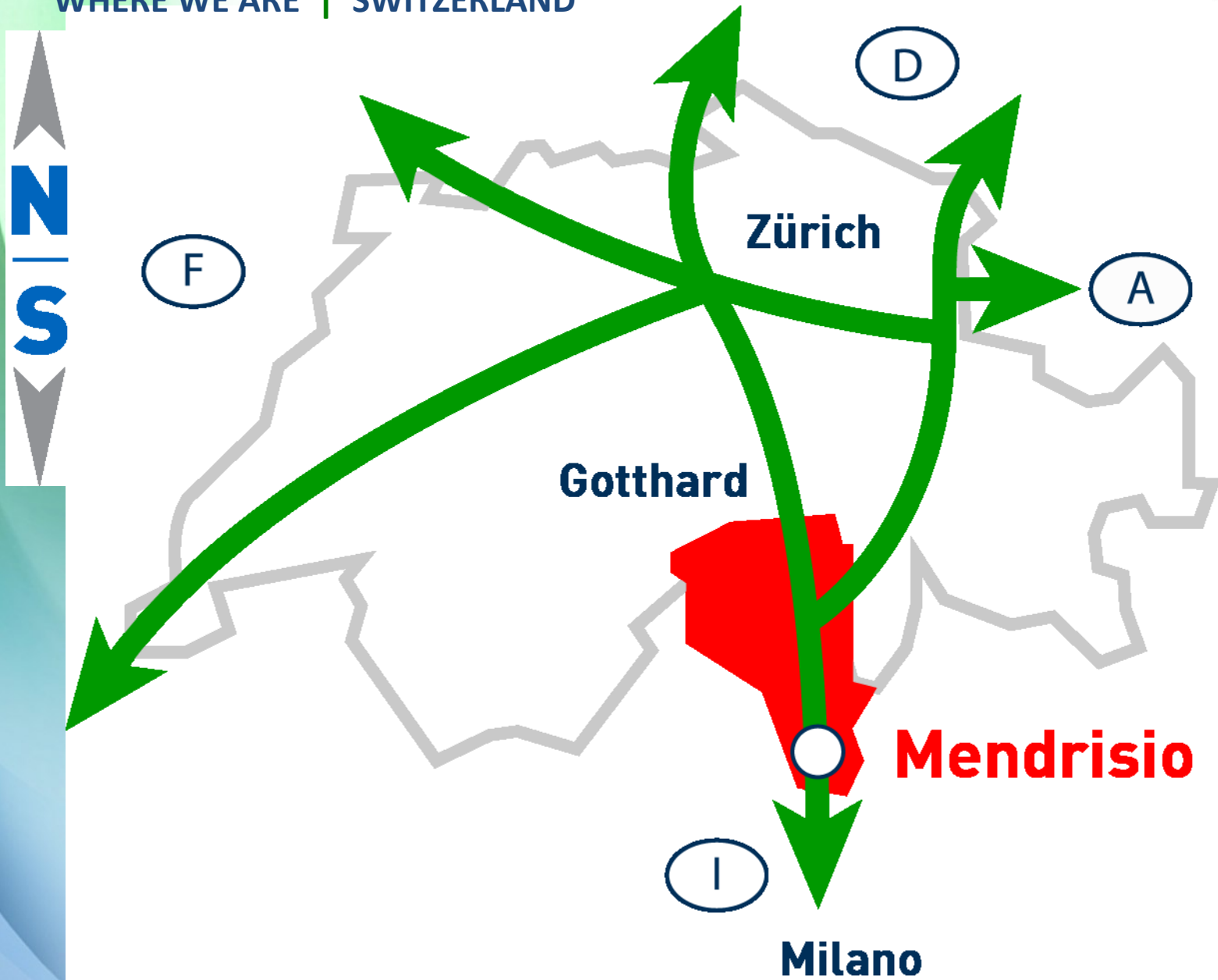


Verband öffentlicher Verkehr
Union des transports publics
Unione dei trasporti pubblici

**+ SWITZERLAND
GLOBAL
ENTERPRISE**
enabling new business

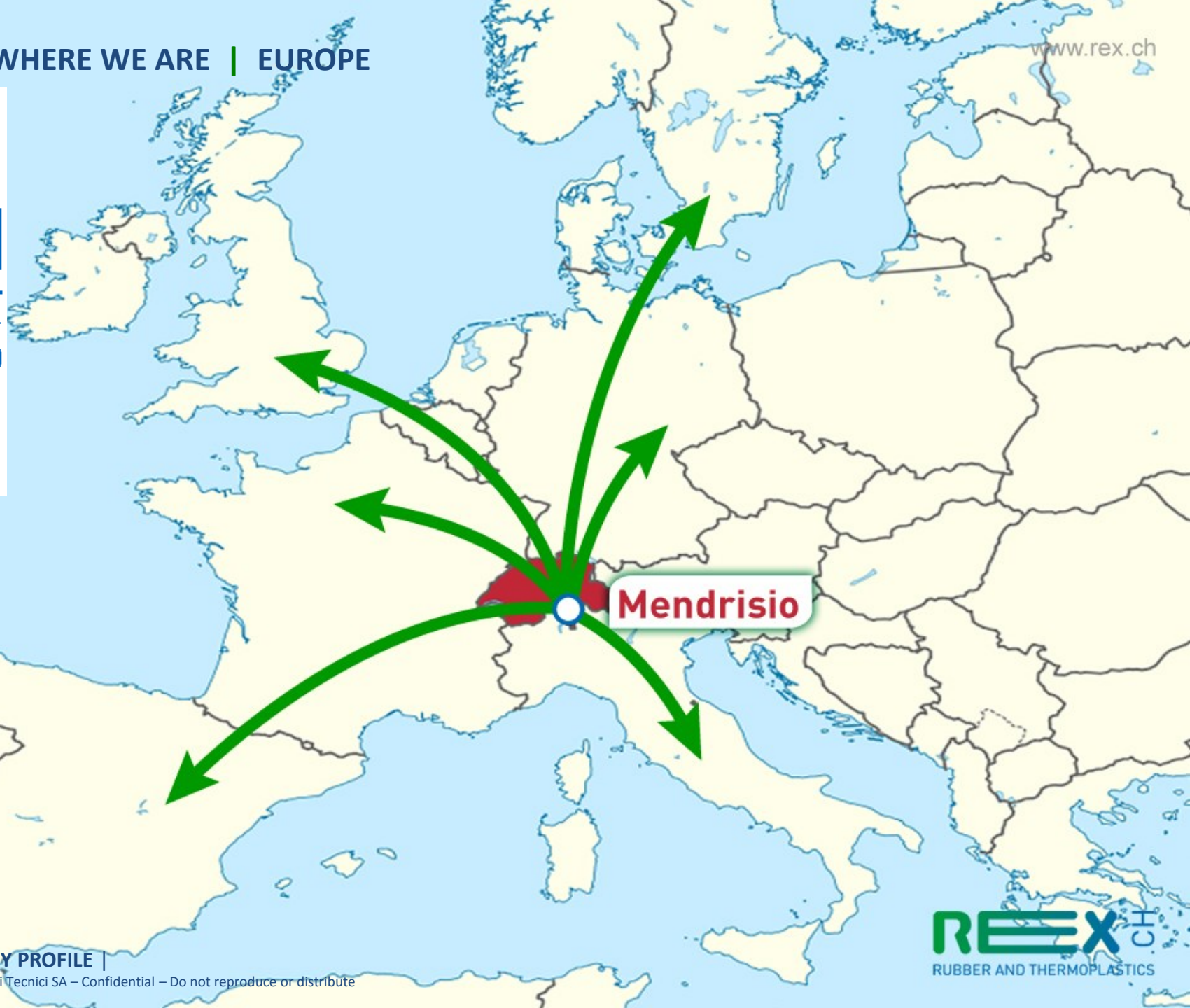
WHERE WE ARE





WHERE WE ARE | EUROPE

www.rex.ch



HOW WE OPERATE



PROJECT DESIGN

A

According to customer specifications

B

Based on customer initial requirements and fine-tuned by REX

C

Complete product development by REX with customer collaboration

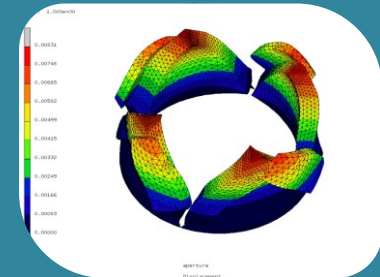
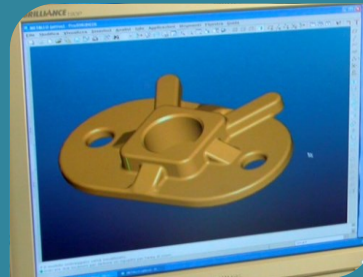
PROJECT EXECUTION

01

- Specifications analysis
- Feasibility studies

02

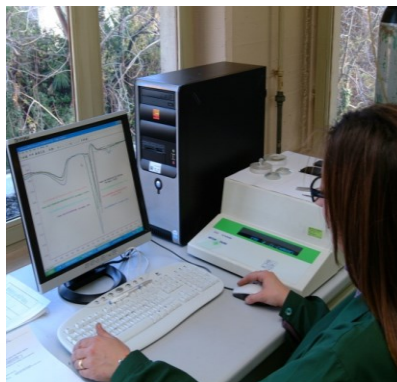
- Design
- Simulation
- Prototype
- Samples



03

- First series production
- Production plan definition

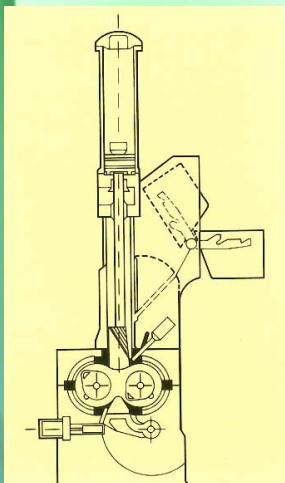




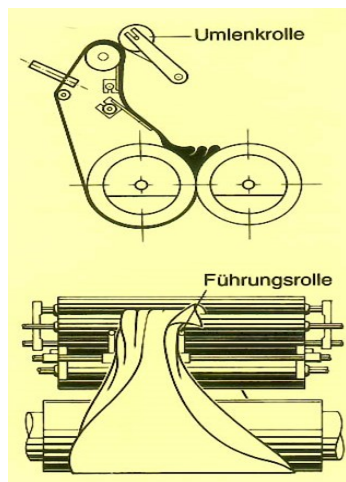
PRODUCTION PROCESS

- 1 Weighing**
- 2 Mixing**
- 3 Metal treatment**
- 4 Vulcanization**
- 5 Deburring and assembly**
- 6 Final control and packaging**

1.1 WEIGHING - MIXING



1.2 MIXING



1.3 CONTROL



3 METAL TREATMENT

www.rex.ch



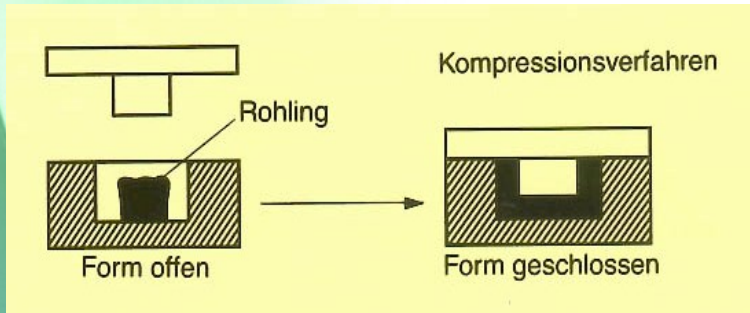
4 VULCANIZATION

www.rex.ch

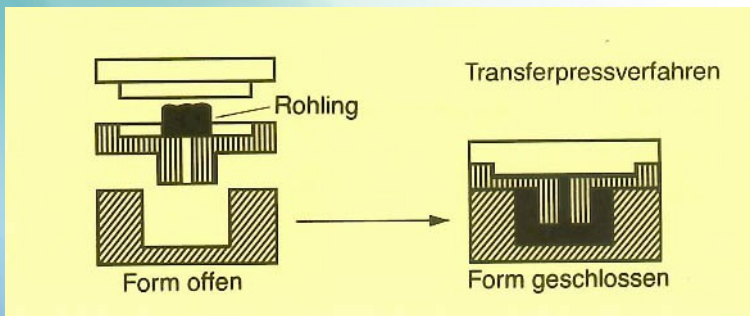


4 VULCANIZATION

4.1 COMPRESSION

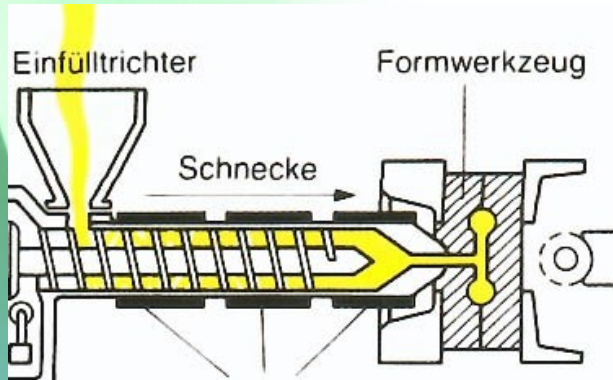


4.2 TRANSFER



4 VULCANIZATION

4.3 INJECTION



4.4 TWO COMPONENT INJECTION



5 CONTROL AND ASSEMBLY

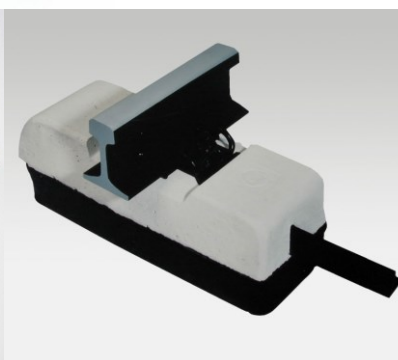


6 FINAL CONTROL AND PACKAGING

www.rex.ch



PRODUCTS





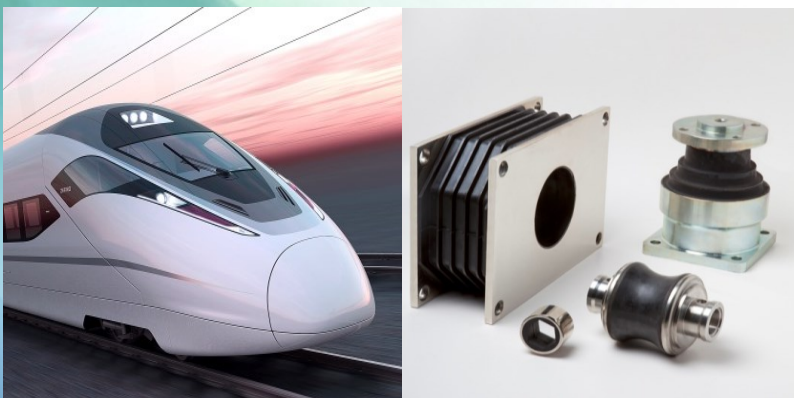




Construction



Food



Railway



Machinery





LIMA - PERÚ

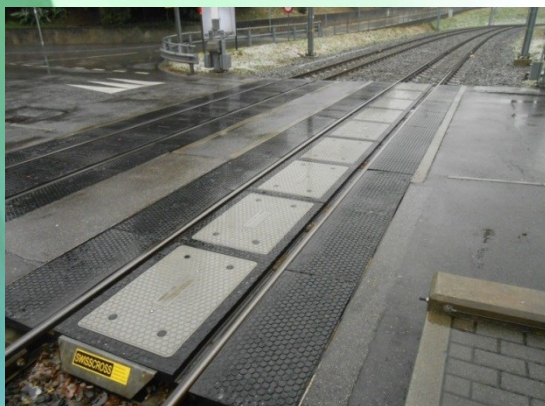


ZIMMERBERG - CH



SWISSCROSS

BAHNÜBERGANG
PASSAGE À NIVEAU
PASSAGGIO A LIVELLO
RAIL LEVEL CROSSING



SWISSCROSS

RUBE

RUBBER- CONCRETE

LEVEL CROSSING



SWISSCROSS

HD

RUBBER

LEVEL CROSSING



SWISSCROSS

GFK

RESIN

SERVICE/PEDESTRIAN
CROSSING



OUR SALES TEAM

www.rex.ch

COMMERCIAL DIRECTOR

Andreas Spittel

SALES OFFICE

Carlo Lorandi

SALES SWITZERLAND

Claudio Rossi

SALES GERMANY

German Lucas

CUSTOMER SERVICE

Karin Pitton

Susanna Celoria

Rebecca Basso

RAIL - SWISSCROSS

Xavier Canton

SWISSSTOP

Carlo Lorandi

Christian Heule

www.rex.ch sales@rex.ch

END