

«SWISSCROSS GFK» PASSAGE OF SERVICE

SWISSCROSS

BAHNÜBERGANG
PASSAGE À NIVEAU
PASSAGGIO A LIVELLO
RAIL LEVEL CROSSING

TYPENZULASSUNG: CH-ZR44TZ2011-10-0014

IRIS
Certification



«SWISSCROSS GFK»
Passage of service



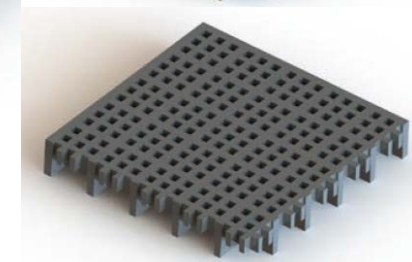
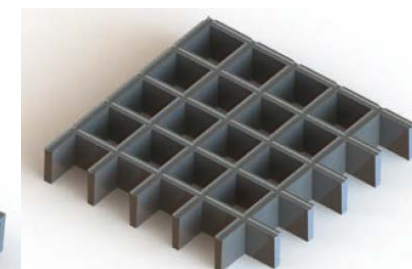
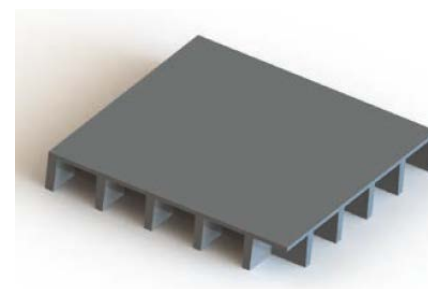
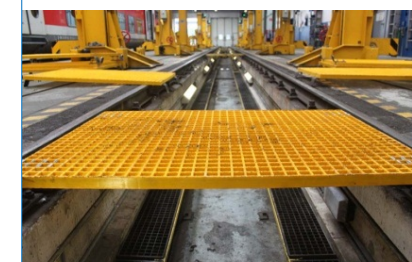
«SWISSCROSS GFK»
Railroad switch



«SWISSCROSS GFK»
Walkways



«SWISSCROSS GFK»
Pit covering



«SWISSCROSS GFK» PASSAGE OF SERVICE



TYPENZULASSUNG: CH-ZR44TZ2011-10-0014

www.rex.ch



Technical informations:

Maximum load in kg:

Thickness 38mm 500 kg/m²
Thickness 50mm 1000 kg/m²

Resistance to slipping:

R13 according to BIA through silicate concave bar surfaces or quarry sand compression

Recession space:

V10 according to BIA with open grids

Armoring E-glass:

UV-stable, self-extinguishing,

Fire resistance:

fire resistant according to DIN 13501 En-1Bfl-s1

Electrical resistance at surface:

10 x 10¹⁵ Ohm

Good resistance in average corrosive environment, very good resistance in environments characterized by fire hazard

Composition:

Vinylester, Isopolyester, Orthopolyester, Phenol

Approved:

EBA (Eisenbahnbundesamt, Germany)
SBB (schweizerische Bundesbahn, Switzerland)



«SWISSCROSS GFK» PASSAGE OF SERVICE



TYPENZULASSUNG: CH-ZR44TZ2011-10-0014



Technical informations:

Modulus of elasticity	22,132 Gpa
Bending strength	602,437 Mpa
Modulus of rupture	29,491 Gpa
Resistance to pressure	206,151 Gpa
Compression modulus	14,951 Gpa
Shock resistance	467,21 KJ/m2

Certified by ABS, DNV

All data reported in this technical specification were carefully calculated. Due to the complexity of use conditions and of processing and application techniques, the reported data and information may be considered only as indicative values. That is why no guarantee may be claimed on the basis of these values. Besides our General Sales Conditions, only written agreements are effective