

# Wheelset support pads



**New!**

**Long lifetime: more than 2000 cycles**  
**Time saving: only one person needed**

**Developed according to the requests of UIC**  
**(International Union of Railways)**

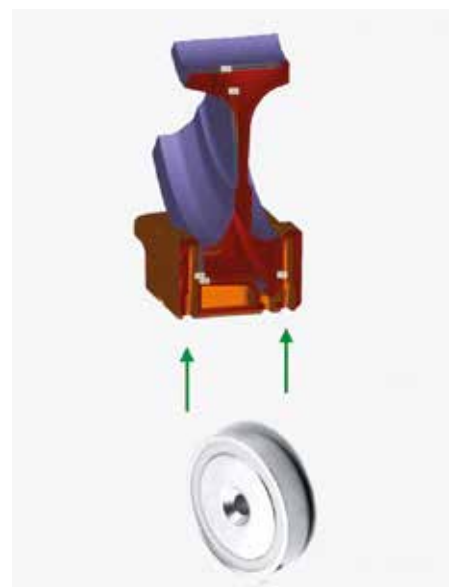


# Wheelset support pads



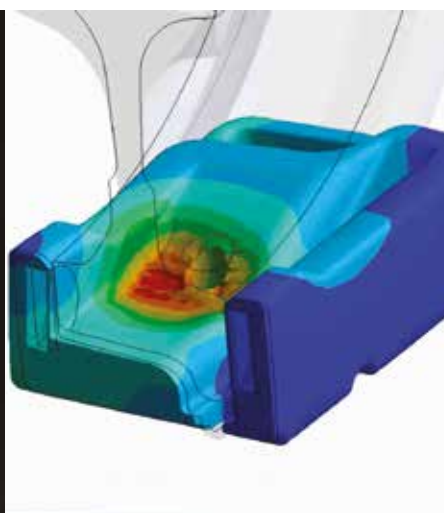
## Application

- Protection of flanges and wheel treads of wheelsets and bogies
- Storage and transport of wheelsets and bogies
- Suitable for diameters between 620 and 1060 mm



## Advantages

- Long lifetime (up to 2000 and more cycles)
- Two integrated magnets helps to fix the support pads at the wheelsets
- Time saving and cost efficient
- Could be modified with your logo



## Fatigue tests

Weight per wheel	Cycles
1 ton	>2000
2 tons	>2000
4 tons	500
5 tons	50

Number of cycles needed to bring the flanges of the wheels in contact with the ground.

**Innovative rubber support pads for a safe and quick transportation of wheelsets and bogies**